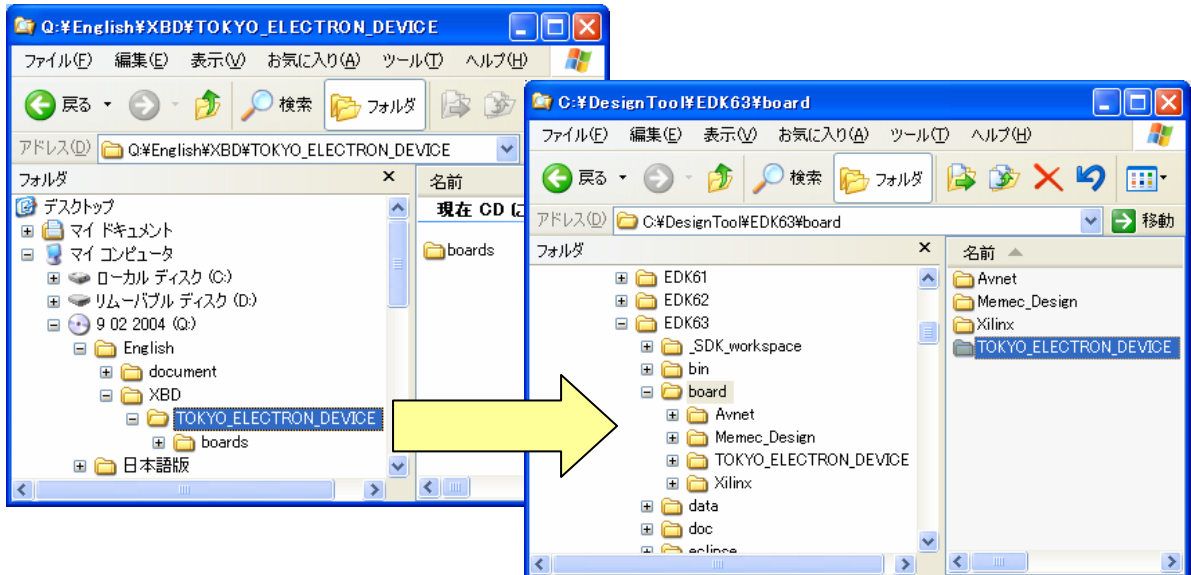


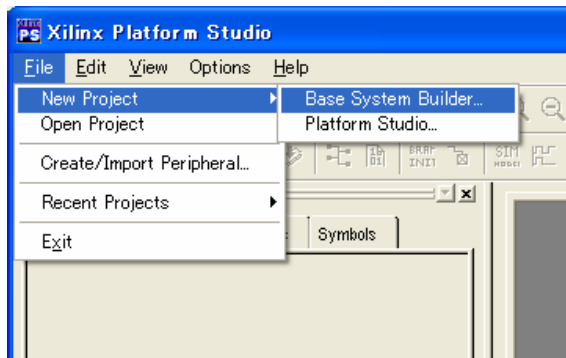
How to install XBD files

Copy the "¥TOKYO_ELECTRON_DEVICE" folder, located in "¥English¥XBD" of TED Embedded Board Solutions CD, into "¥board" under the EDK installation directory (default is "C:¥EDK").

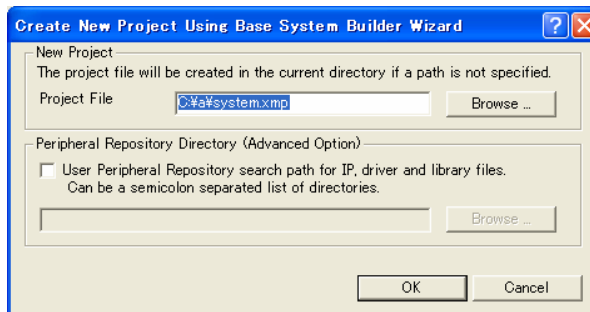


How to generate a XPS project

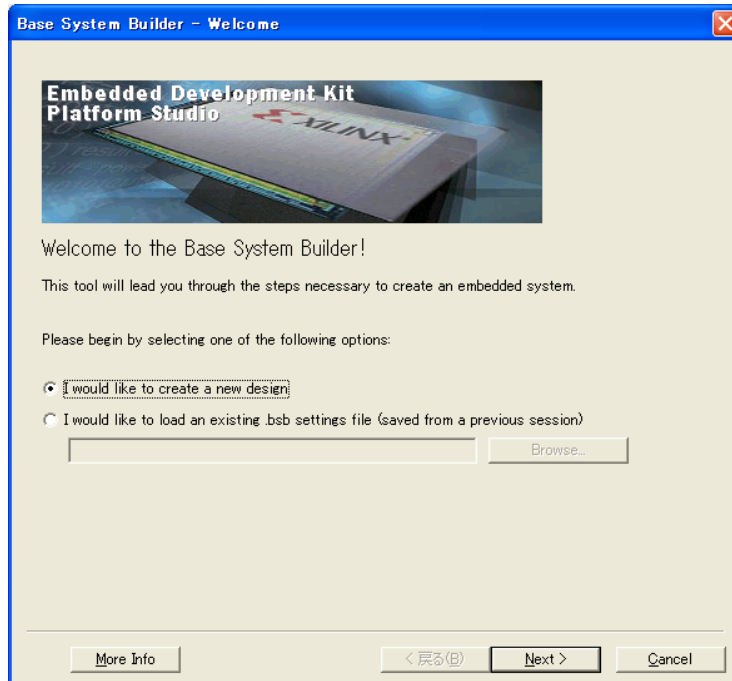
1. Click "File" → "New Project" → "Base System Builder" from XPS menu bar.



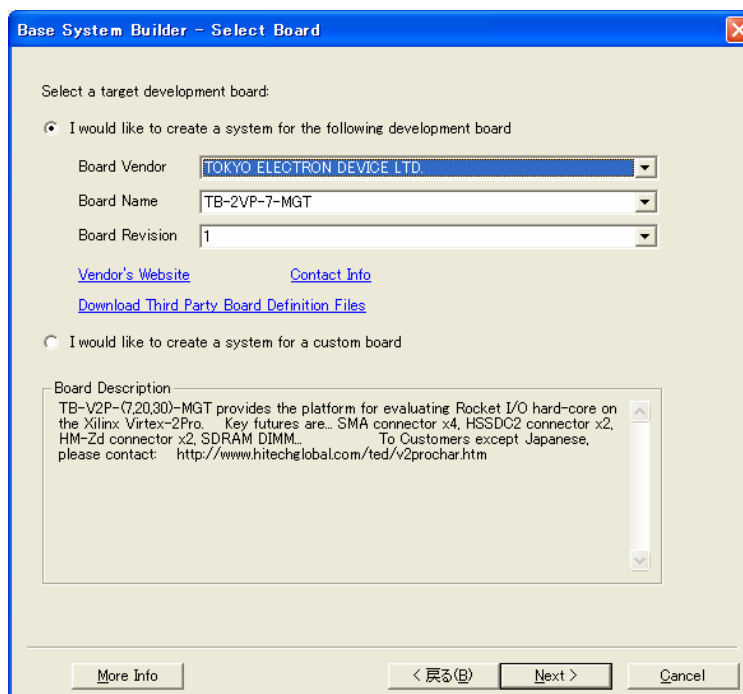
2. Once the following window pops up, you will be in the process to set up a new project.



3. Click "Next>".



4. Select "TOKYO ELECTRON DEVICE" and the correct name of the board you will target in the "Board Vender" box and the "Board Name" box respectively.



5. Once all parameters are set, click "Generate". Then the XPS project file for the targeted board will be generated.